



9 Ashmore Close | London | SE15
5GY

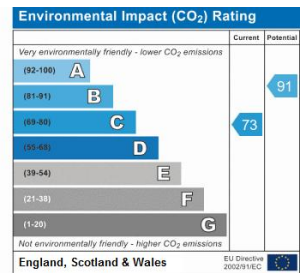
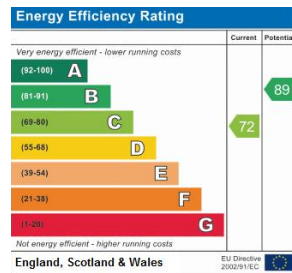
Freehold

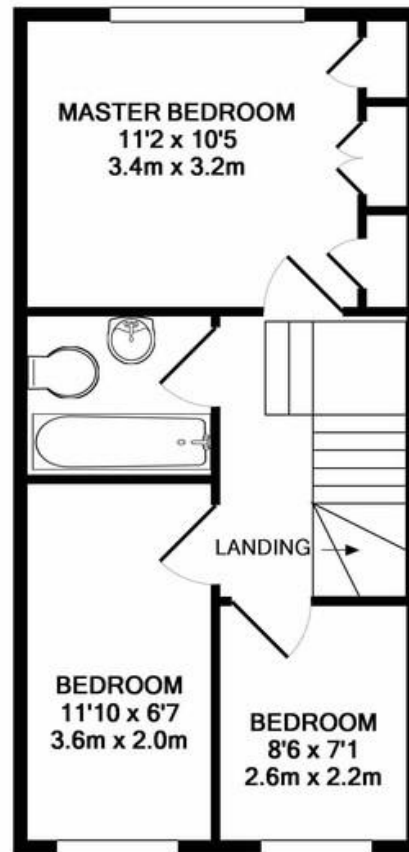
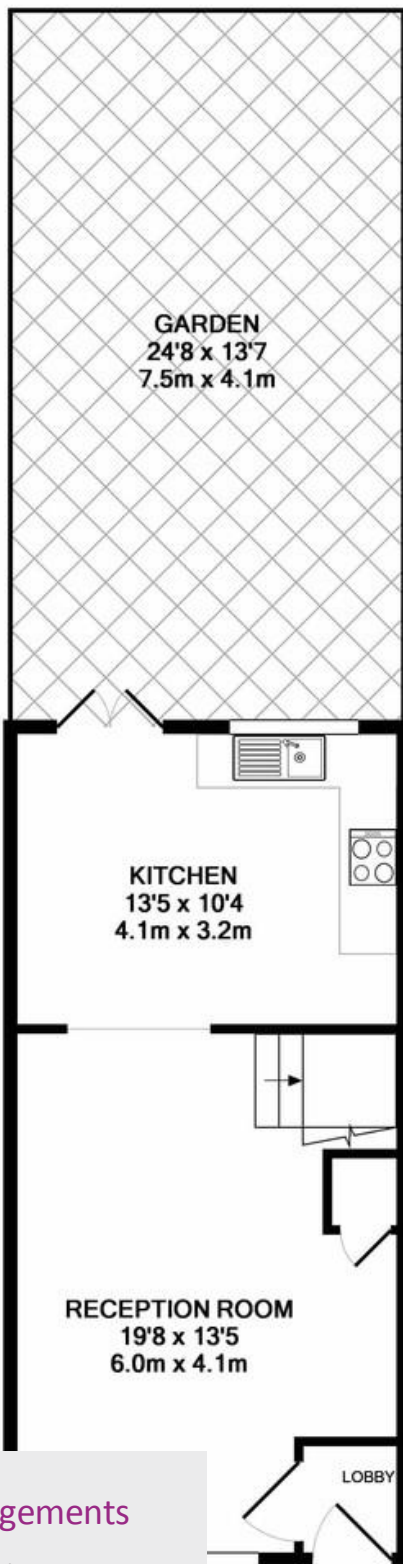
£550,000

- Three bedrooms
- Family house
- Driveway
- Private garden
- Modern Décor
- New kitchen
- Peckham Rye Station
- Peckham Library
- Local amenities
- Quiet cul-de-sac



A beautifully refurbished three-bedroom house with private driveway in a quiet cul-de-sac in the heart of Peckham. This lovely family home has modern decor throughout, the large open plan living/dining room leads through to the newly renovated kitchen. From the kitchen you have direct access to the private sunny west-facing garden. Upstairs is a large, bright master bedroom with built-in wardrobes. There are two further bedrooms and a newly-decorated bathroom. The property has a generous a loft space providing extra storage perfect for a growing family. The house is set in a peaceful cul-de-sac a few minutes walk from the vibrant shops bars and restaurants in Peckham. Peckham Rye station is a 10-minute walk with direct services to London Bridge and Victoria.





1ST FLOOR
APPROX. FLOOR
AREA 389 SQ.FT.
(36.1 SQ.M.)

Viewing Arrangements

Strictly by appointment

Contact Details

121 Denmark Hill

London

SE5 8EN

www.urbanvillagehomes.co.uk

sales@urbanvillagehomes.com

020 3519 9121

1ST FLOOR
APPROX. FLOOR
AREA 389 SQ.FT.
(36.1 SQ.M.)

TOTAL APPROX. FLOOR AREA 777 SQ.FT. (72.2 SQ.M.)

Every attempt has been made to ensure the accuracy of the floor plan contained here, measurements of windows, rooms and any other items are approximate and no responsibility is taken for any error, omission, or mis-statement. This plan is for illustrative purposes only and should be used as such by any prospective purchaser. The services, systems and appliances shown have not been tested and no guarantee as to their operability or efficiency can be given.

Made with Metropix ©2018

Agents Note: Whilst every care has been taken to prepare these sales particulars, they are for guidance purposes only. All measurements are approximate and are for general guidance purposes only and whilst every care has been taken to ensure their accuracy, they should not be relied upon and potential buyers are advised to recheck the measurements.