



Herne Hill Road | London | SE24 0AR

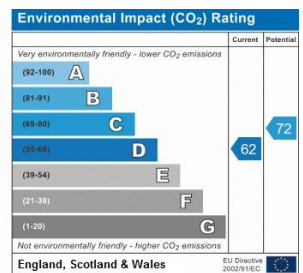
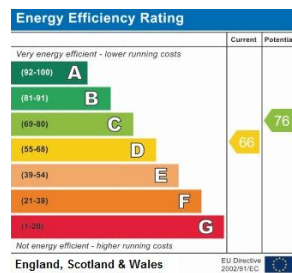
Freehold

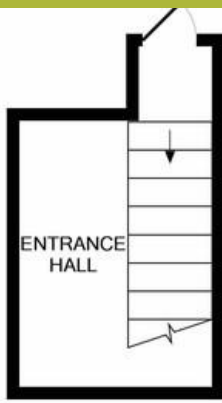
£499,995

- Two double bedrooms
- Two bathrooms
- Top floor
- Split level
- Open plan reception room
- Share of freehold
- Kings college hospital
- Walking distance to Brixton Tube
- Loughborough Junction
- Ruskin Park

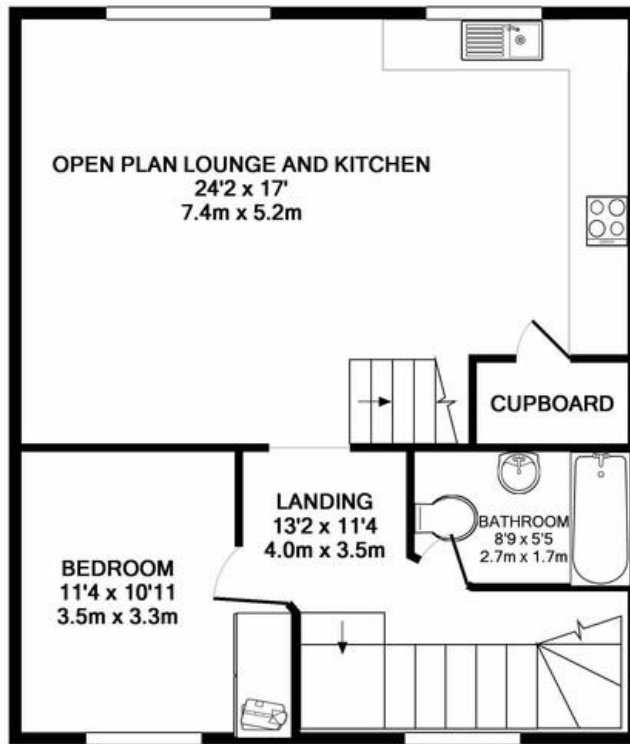


Two bedroom top floor apartment, over two floors. Share of Freehold, Victorian conversion. Two double bedrooms, bathroom and separate WC. Open plan living and kitchen makes it perfect for entertaining. Well designed spaces, with good storage and a bright and airy feel. Walking distance to Brixton Tube & Brixton Village. Located very close to Loughborough junction station, with fast connections to Blackfriars, Kings Cross and Luton Airport. Denmark Hill, Ruskin park and Kings College Hospital.

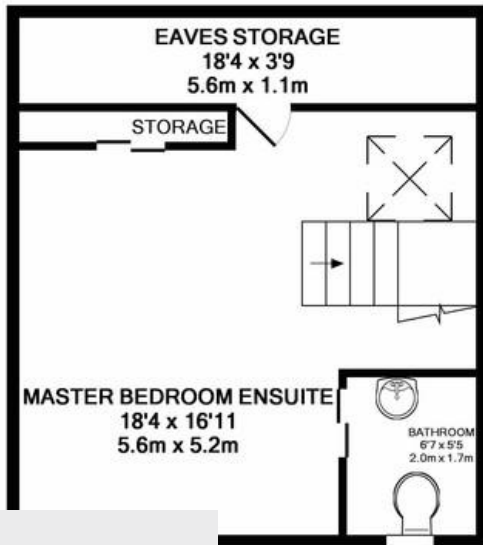




ENTRANCE FLOOR
APPROX. FLOOR
AREA 97 SQ.FT.
(9.0 SQ.M.)



GROUND FLOOR
APPROX. FLOOR
AREA 684 SQ.FT.
(63.5 SQ.M.)



1ST FLOOR
ROX. FLOOR
AREA 378 SQ.FT.
(35.2 SQ.M.)

TOTAL APPROX. FLOOR AREA 1159 SQ.FT. (107.7 SQ.M.)

Whilst every attempt has been made to ensure the accuracy of the floor plan contained here, measurements of doors, windows, rooms and any other items are approximate and no responsibility is taken for any error, omission, or mis-statement. This plan is for illustrative purposes only and should be used as such by any prospective purchaser. The services, systems and appliances shown have not been tested and no guarantee as to their operability or efficiency can be given

Made with Metropix ©2018

Viewing Arrangements

Strictly by appointment

Contact Details

121 Denmark Hill

London

SE5 8EN

www.urbanvillagehomes.co.uk

sales@urbanvillagehomes.com

020 3519 9121

Agents Note: Whilst every care has been taken to prepare these sales particulars, they are for guidance purposes only. All measurements are approximate and are for general guidance purposes only and whilst every care has been taken to ensure their accuracy, they should not be relied upon and potential buyers are advised to recheck the measurements