



The Hyde, Langdon Hills Guide price £185,000

** TWO DOUBLE BEDROOMS* SPLIT LEVEL MAISONETTE* NO CHAIN* SECURE PARKING* BALCONY* CLOSE TO LAINDON STATION* MODERN KITCHEN* LARGE LOUNGE* THERE IS CURRENTLY A TENANT IN SITUE**

You may download, store and use the material for your own personal use and research. You may not republish, retransmit, redistribute or otherwise make the material available to any party or make the same available on any website, online service or bulletin board of your own or of any other party or make the same available in hard copy or in any other media without the website owner's express prior written consent. The website owner's copyright must remain on all reproductions of material taken from this website.

**Call to arrange your viewing today
01702 710555**



heated towel rail, tiled flooring.

W/C 5'04 x 3'04 (1.63m x 1.02m)

Double glazed obscure window to side, low level w/c, tiled walls and floor.

Kitchen 8'09 x 8'08 (2.67m x 2.64m)

Fitted with a range of base units with complementary work surface with inset sink, space for cooker and space for washing machine, cupboard with space for tall fridge freezer, tiled splash backs, tiled flooring, double glazed window to side, wall mounted radiator.

Lounge/Diner 18'01 x 12'05 (5.51m x 3.78m)

Double glazed window to side, double glazed sliding patio door to balcony, two wall mounted radiators, carpet laid to floor.

Agents Notes

Due to the new government notice regarding a 6 month notice period for tenants, the property is only being offered to landlords.



Main Features

- Double Glazed
- Gas Central Heating
- Parking
- Balcony
- Near Station
- Two Double Bedrooms

Entrance

Via own front door leading to..

Hallway

Double glazed obscure window to front, wall mounted radiator, storage cupboard carpet laid to floor, stairs to first floor, door leading to...

Ground Floor Bedroom 12'10 x 8'08 (3.91m x 2.64m)

Double glazed window to rear, built in storage/wardrobe, wall mounted radiator, carpet laid to floor.

Landing

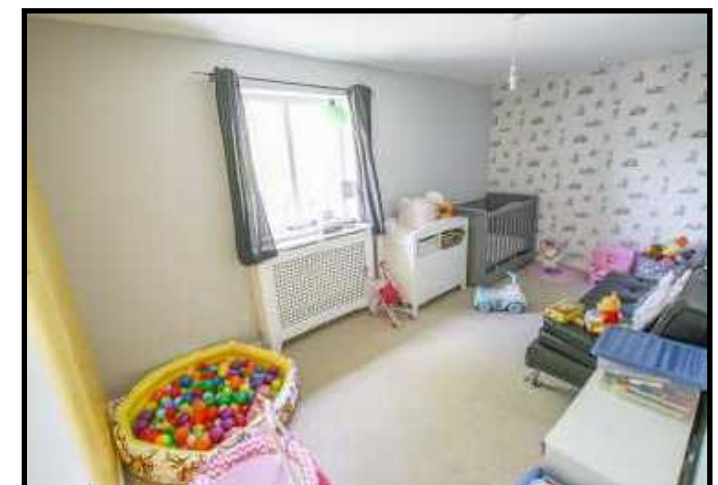
Storage cupboard, doors to accommodation, carpet laid to floor,

Bedroom Two 14'8 x 9'0 (4.47m x 2.74m)

Double glazed window to rear, wall mounted radiator, built in storage/wardrobe, carpet laid to floor.

Bathroom 5'07 x 5'07 (1.70m x 1.70m)

Two piece suite comprising of panel bath with electric shower over and glass shower screen, wash hand basin with mixer tap, tile walls, obscure double glazed window to front,



Call to arrange your viewing today
01702 710555